



Top product features!

- Robust design and compact metal housings provide long life and reliability in industrial environments
- CMOS image sensor and Digital Signal Processor with no moving parts provide high performance and durability
- Easy-to-use Setup Wizard guides you step-by-step for simple installation
- Flexible connections with Ethernet interface
- Self-contained unit (internal lighting)

The inspection sensor for error-proofing applications

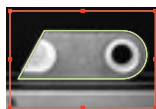
efector dualis provides reliable performance in production control. Fast processes or moving objects can be detected and precisely evaluated with the sensor's fast image capture and evaluation.

The sensor is an ideal solution for inspection and error-proofing applications such as right part / wrong part, correct orientation, missing component and object character verification.

Additional application examples



correct orientation



incorrect orientation



Feeding technology

Feeder bowls are commonly used to constantly supply an assembly line with small parts. These parts, however, must be in the proper orientation to allow correct assembly.

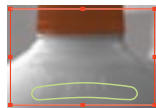
efector dualis can identify incorrect orientation of parts in a feeder bowl before they are applied.



test passed



test failed



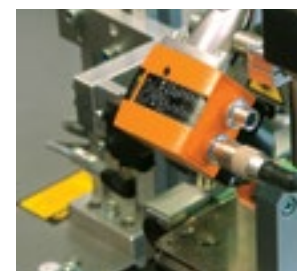
Object character verification

Even the smallest error, such as a missing date on a milk bottle, can cause large problems in a production line.

The efector dualis is ideal for object character verification in a moving production line.

In this example, efector dualis detects a series of preset characters that indicate expiration date. In the following picture, efector dualis detects the missing characters and sends an alarm.

Built-in intelligence



Independent evaluation: efector dualis includes an image sensor, evaluation electronics and lighting integrated in one robust, industrial compatible housing.

IO-Link

Company

IO-Link

Position Sensors

Inductive

Capacitive

Cylinder / valve position

Photoelectrics / lasers / fiber optics

Distance / Application specific

Ultrasonic

Motion Control

Encoders / Speed monitors

Vision Sensors

2D / 3D inspection



1 - 5



6 - 21



22 - 55



56 - 61



62 - 71



72 - 111



112 - 117



118 - 119



120 - 127



128 - 143



Product + accessory selector

Dimensions	Output	Lighting	Max. Field of View Size	Detection Rate	Max. Motion Speed	Operating Voltage	Supply Current	Part No.	List Price (1-pc.)
80 x 42 x 59	PNP	infrared 850 nm	400 x 300 mm	20 Hz	1 m/s	24 VDC ± 10 %	< 300 mA	O2D224	\$978.00
80 x 42 x 53.5	PNP	infrared 850 nm	640 x 480 mm	20 Hz	1 m/s	24 VDC ± 10 %	< 300 mA	O2D220	\$978.00
80 x 42 x 53.5	PNP	infrared 850 nm	1320 x 945 mm	20 Hz	1 m/s	24 VDC ± 10 %	< 300 mA	O2D222	\$978.00
80 x 42 x 59	NPN	infrared 850 nm	400 x 300 mm	20 Hz	1 m/s	24 VDC ± 10 %	< 300 mA	O2D225	\$978.00
80 x 42 x 53.5	NPN	infrared 850 nm	640 x 480 mm	20 Hz	1 m/s	24 VDC ± 10 %	< 300 mA	O2D227	\$978.00
80 x 42 x 53.5	NPN	infrared 850 nm	1320 x 945 mm	20 Hz	1 m/s	24 VDC ± 10 %	< 300 mA	O2D229	\$978.00

Accessories

Type	Description	Part No.	List Price (1-pc.)	Type	Description	Part No.	List Price (1-pc.)
	Mounting Set, 100 mm rod	U60042	\$45.00		M12 Micro DC (8-pin) 2 m, PUR	E11950	\$29.00
	Mounting Set, 100 mm rod with rail mount cube	U60043	\$51.00		M12 Micro DC (8-pin) 5 m, PUR	E11807	\$36.00
	Protective plastic cover	E21166	\$102.00		M12 Micro DC (8-pin) 10 m, PUR	E11311	\$66.00
	Plastic lens for diffusing light	E21165	\$119.00		M12 Micro DC (8-pin) 2 m, PUR	E11231	\$29.00
	Protective glass cover	E21168	\$102.00		M12 Micro DC (8-pin) 5 m, PUR	E11232	\$36.00
	Ethernet cable, 2 m, M12 D-coded / RJ45, cross-link	E11898	\$45.00		M12 Micro DC (8-pin) 10 m, PUR	E11806	\$65.00
	Ethernet cable, 5 m, M12 D-coded / RJ45, cross-link	E18422	\$54.00				
	Ethernet cable, 10 m, M12 D-coded / RJ45, cross-link	E18423	\$69.00				

See pages 140 - 141 for illumination.

Technical Specs

Maximum load current:	100 mA (per switching output)
Supply current:	< 300 mA
Detection rate:	20 Hz
Maximum motion speed:	1 m/s
Lighting:	infrared 850 nm
Operating voltage:	24 VDC ± 10 %
Operating temperature:	14...140 °F (-10...60 °C)
Protection rating:	IP67
Material:	Housing: die-cast zinc Front pane: glass LED window: polycarbonate
Trigger mode:	External 24 V, PNP, NPN, continuous, TCP/IP
Parameter setting / process interface:	Ethernet 10 Base-T, Ethernet TCP, Ethernet IP

تامین کننده ملزومات برق

الکتریکال - مکانیکال - ابزار دقیق

۰۲۱-۶۶۱۷۲۰۳۲

www.sazehgostarsgp.com



Dedicated sales engineers
ifm's experienced sales engineers understand your applications and provide solutions to your challenges.

- Place orders, tech support 800-441-8246
- Visit our product catalog www.ifm.com/us
- Shop for products online Easy ordering via eShop

Safety Technology

Process Sensors

Industrial Networks

ID Systems

Machine Condition

Power Supplies

Wiring Technology

144 - 155	156 - 175	176 - 191	192 - 207	208 - 225	226 - 239	240 - 251	252 - 253	254 - 259	260 - 263	264 - 277



Top product features!

- Ideal for inspection and error-proofing applications with irregularly shaped objects
- Reliable inspection testing throughout the production process
- CMOS image element and powerful digital signal processor
- Robust housing for use in industrial environments
- Easy application Setup Wizard offers step-by-step instruction with advanced functionality

efector dualis Pixel Counter



ifm's O2V Series efector dualis Pixel Counter sensor solves a variety of inspection and error-proofing applications throughout the manufacturing process. The compact CMOS vision sensor provides reliable performance in production control. The Pixel Counter analyzes the area of an object by counting the pixels and can identify objects that vary in shape, size or shade.

The O2V Series Pixel Counter includes an image sensor, evaluation electronics and integrated lighting in a die-cast metal housing that withstands harsh industrial

environments. Objects are reliably detected and precisely evaluated with the sensor's fast image capture and powerful algorithms. The sensor's push-button setup and 4-digit numeric display indicates the sensor's output.

An on-board lighting element illuminates the object and provides the correct amount of image brightness at various ranges. An easily accessible focus tool quickly defines images. The sensor features an easy-to-follow Setup Wizard that guides the user for quick setup and supports Allen-Bradley's Ethernet IP and standard Ethernet TCP products.

Additional application examples



Black seat frame

The goal is to separate a black seat frame from a silver seat frame. A standard contrast sensor would solve this application, but typically lacks the sensing range required to detect the seat frame.



Silver seat frame

The Pixel Counter can be used for simple contrast applications when extra distance is needed and can easily detect the silver seat frame in this application.



Correct molding

A piece of metal is inserted in a rubber mold, and it is imperative that the area is covered smoothly. In this case, while in the molding process, an inconsistent shape formed around the insert.



Incorrect molding

The molding process can leave an inconsistent shape around the insert. The Pixel Counter inspects for a low level of bright pixels, detecting an incorrect molding.

www.sazehgostar.sgp.com

@sazehgostar paytakht

Company	IO-Link	Position Sensors		Cylinder / valve position	Photoelectrics / lasers / fiber optics	Distance / Application specific	Ultrasonic	Motion Control	Encoders / Speed monitors	2D / 3D inspection
1 - 5	6 - 21	22 - 55	56 - 61	62 - 71	72 - 111	112 - 117	118 - 119	120 - 127	128 - 143	



Product + accessory selector

DC • efactor dualis Pixel Counter

Type	Maximum Field of View Size [mm]	Type of Light LED	Detection Rate [Hz]	Motion Speed (Maximum) [m/s]	Process Interface	Transistor Outputs (up to 5)	Part No.	List Price (1-pc.)
8-pin · M12 connector								
	400 x 300	White	20	1	Ethernet TCP / Ethernet IP	PNP	O2V104	\$978.00
	400 x 300	White	20	1	Ethernet TCP / Ethernet IP	NPN	O2V105	\$978.00
	400 x 300	Infrared	20	1	Ethernet TCP / Ethernet IP	PNP	O2V124	\$978.00
	400 x 300	Infrared	20	1	Ethernet TCP / Ethernet IP	NPN	O2V125	\$978.00
	640 x 480	White	20	1	Ethernet TCP / Ethernet IP	PNP	O2V100	\$978.00
	640 x 480	White	20	1	Ethernet TCP / Ethernet IP	NPN	O2V101	\$978.00
	640 x 480	Infrared	20	1	Ethernet TCP / Ethernet IP	PNP	O2V120	\$978.00
	640 x 480	Infrared	20	1	Ethernet TCP / Ethernet IP	NPN	O2V121	\$978.00
	1320 x 945	White	20	1	Ethernet TCP / Ethernet IP	PNP	O2V102	\$978.00
	1320 x 945	White	20	1	Ethernet TCP / Ethernet IP	NPN	O2V103	\$978.00
	1320 x 945	Infrared	20	1	Ethernet TCP / Ethernet IP	PNP	O2V122	\$978.00
	1320 x 945	Infrared	20	1	Ethernet TCP / Ethernet IP	NPN	O2V123	\$978.00

Accessories

Type	Description	Part No.	List Price (1-pc.)
	Mounting Set, 100 mm rod	U60042	\$45.00
	Mounting Set, 100 mm rod with rail mount cube	U60043	\$51.00
	Protective plastic cover	E21166	\$102.00
	Plastic lens for diffusing light	E21165	\$119.00
	Protective glass cover	E21168	\$102.00
	Ethernet cable, 2 m, M12 D-coded / RJ45, cross-link	E11898	\$45.00
	Ethernet cable, 5 m, M12 D-coded / RJ45, cross-link	E18422	\$54.00
	Ethernet cable, 10 m, M12 D-coded / RJ45, cross-link	E18423	\$69.00

Cordsets

Type	Description	Part No.	List Price (1-pc.)
	M12 Micro DC (8-pin) 2 m, PUR	E11950	\$29.00
	M12 Micro DC (8-pin) 5 m, PUR	E11807	\$36.00
	M12 Micro DC (8-pin) 10 m, PUR	E11311	\$66.00
	M12 Micro DC (8-pin) 2 m, PUR	E11231	\$29.00
	M12 Micro DC (8-pin) 5 m, PUR	E11232	\$36.00
	M12 Micro DC (8-pin) 10 m, PUR	E11806	\$65.00

Technical Specs

Maximum load current:	100 mA (per switching output)
Supply current:	< 300 mA
Detection rate:	20 Hz
Maximum motion speed:	1 m/s
Lighting:	infrared 850 nm
Operating voltage:	24 VDC ± 10 %
Operating temperature:	14...140 °F (-10...60 °C)
Protection rating:	IP67
Material:	Housing: die-cast zinc Front pane: glass LED window: polycarbonate
Trigger mode:	External 24 V, PNP, NPN, continuous, TCP/IP
Parameter setting / process interface:	Ethernet 10 Base-T, Ethernet TCP, Ethernet IP

See pages 140 - 141 for illumination.

www.sazehgostar.com

Safety Technology

Process Sensors

Industrial Networks

ID Systems

Machine Condition

Power Supplies

Wiring Technology

Safety products

Pressure

Flow

Level

Temperature

AS-i network

Safety systems

RF identification systems

Diagnostic systems

Power supplies

Cordset solutions



144 - 155

156 - 175

176 - 191

192 - 207

208 - 225

226 - 239

240 - 251

252 - 253

254 - 259

260 - 263

264 - 277



Top product features!

- Robust design and compact metal housing provide long life and reliability in industrial environments
- CMOS image sensor and digital signal processor with no moving parts for durability
- Reliably reads dot-peened, laser-etched and printed data matrix codes as well as printed bar codes
- Configurable four-quadrant lighting improves readability, reduces glare and the need for external lighting
- Easy application Setup Wizard guides you step-by-step with advanced functionality for demanding applications

Reliable identification of data matrix and 1D codes



The ifm Multi-Code Reader is designed to read 2D data matrix codes and 1D bar codes in high speed industrial automation applications.

The versatile Multi-Code Reader can identify, verify and qualify most marking methods including dot-peened, laser-etched and printed data matrix codes as well as printed barcodes.

The Multi-Code Reader features a maximum speed of 7 meters/second. The unit reads three types of 2D codes: ECC200, PDF-417 and QR as well as 26 styles of printed barcodes.

A better alternative from ifm

Features	ifm
Robust housing	✓
Reads both 2D and 1D codes	✓
CMOS image sensor	✓
Reads all marking methods	✓
Orientation independent	✓
Configurable quadrant lighting	✓
7 meters/second line speed	✓
Easy Setup Wizard	✓
Switching output for I/O	✓
Ethernet TCP/IP	✓
Price – 50% lower than current technologies	\$936

Challenge (1D Barcode)



Traditional barcode readers can only read the 1D code in horizontal or vertical positions.

ifm Solution (1D Barcode)



ifm's camera based Multicode Readers can read 1D barcodes in multiple orientations.

سازگستر پیتا کت
www.sazehgostar.com

IO-Link

Company

IO-Link

Position Sensors

Inductive

Capacitive

Cylinder / valve position

Photoelectrics / lasers / fiber optics

Distance / Application specific

Ultrasonic

Motion Control

Encoders / Speed monitors

Vision Sensors

2D / 3D inspection



1 - 5



6 - 21



22 - 55



56 - 61



62 - 71



72 - 111



112 - 117



118 - 119



120 - 127



128 - 143



Product + accessory selector

Dimensions (mm)	Lighting	Max. Field of View Size	Readings	Max. Motion Speed	Process Interface	Operating Voltage	Supply Current	Part No.	List Price (1-pc.)
CMOS image sensor, black and white, VGA resolution 640 x 480									
80 x 42 x 53.5	Visible red	68 x 48 mm	20 Hz	7 m/s	Ethernet TCP/IP, EtherNet/IP, RS-232	24 VDC ± 10 %	300 mA	O2I300	\$959.00
80 x 42 x 53.5	Visible red	132 x 94 mm	20 Hz	7 m/s	Ethernet TCP/IP, EtherNet/IP, RS-232	24 VDC ± 10 %	300 mA	O2I302	\$959.00
80 x 42 x 59	Visible red	400 x 300 mm	20 Hz	7 m/s	Ethernet TCP/IP, EtherNet/IP, RS-232	24 VDC ± 10 %	300 mA	O2I304	\$959.00
80 x 42 x 53.5	Infrared	68 x 48 mm	20 Hz	7 m/s	Ethernet TCP/IP, EtherNet/IP, RS-232	24 VDC ± 10 %	300 mA	O2I301	\$959.00
80 x 42 x 53.5	Infrared	132 x 94 mm	20 Hz	7 m/s	Ethernet TCP/IP, EtherNet/IP, RS-232	24 VDC ± 10 %	300 mA	O2I303	\$959.00
80 x 42 x 59	Infrared	400 x 300 mm	20 Hz	7 m/s	Ethernet TCP/IP, EtherNet/IP, RS-232	24 VDC ± 10 %	300 mA	O2I305	\$959.00

Accessories

Type	Description	Part No.	List Price (1-pc.)
	Mounting Set, 100 mm rod	U60042	\$45.00
	Mounting Set, 100 mm rod with rail mount cube	U60043	\$51.00
	Plastic lens for diffusing light	E21165	\$119.00
	Plastic protective lens for food and beverage applications	E21166	\$102.00
	Glass protective lens	E21168	\$102.00

Cordsets

Type	Description	Part No.	List Price (1-pc.)
	M12 Micro DC (8-pin) 2 m, PUR	E11950	\$29.00
	M12 Micro DC (8-pin) 5 m, PUR	E11807	\$36.00
	M12 Micro DC (8-pin) 10 m, PUR	E11311	\$66.00
	M12 Micro DC (8-pin) 2 m, PUR	E11231	\$29.00
	M12 Micro DC (8-pin) 5 m, PUR	E11232	\$36.00
	M12 Micro DC (8-pin) 10 m, PUR	E11806	\$65.00
	Ethernet cable, 2 m, M12 D-coded / RJ45, cross-link	E11898	\$45.00
	Ethernet cable, 5 m, M12 D-coded / RJ45, cross-link	E18422	\$54.00
	Ethernet cable, 10 m, M12 D-coded / RJ45, cross-link	E18423	\$69.00

See pages 140 - 141 for illumination.

▶ Can't find the right sensor for your application, call 800-441-8246 or visit www.ifm.com/us

Technical Specs

Maximum load current:	100 mA (per switching output)
Supply current:	< 300 mA
Detection rate:	≤ 20 Hz
Maximum motion speed:	≤ 7 m/s
Lighting:	infrared 850 nm; visible red 625 nm
Operating voltage:	24 VDC ± 10 %
Operating temperature:	14...122 °F (-10...50 °C)
Protection rating:	IP67
Material:	Housing: die-cast zinc Front pane: glass LED window: polycarbonate
Trigger mode:	External 24 V, PNP, continuous, TCP/IP, Ethernet/IP
Parameter setting / process interface:	Ethernet 10 Base-T, Ethernet TCP, Ethernet IP



Class 2 laser

Reliable service center

The ifm service center team provides tech support, product quotes, delivery information and order placement.

- Place orders, tech support**
800-441-8246
- Visit our product catalog**
www.ifm.com/us
- Shop for products online**
Easy ordering via eShop

Safety Technology | Process Sensors | Industrial Networks | ID Systems | Machine Condition | Power Supplies | Wiring Technology

Safety products	Pressure	Flow	Level	Temperature	AS-i network	Safety systems	RF identification systems	Diagnostic systems	Power supplies	Cordset solutions
144 - 155	156 - 175	176 - 191	192 - 207	208 - 225	226 - 239	240 - 251	252 - 253	254 - 259	260 - 263	264 - 277



Top product features!

- Uniform and shadow-free illumination of the object
- Permanent or pulsed light operation with optional high intensity light
- White light, red light and infrared versions
- Compact design and robust housing
- Diffuser accessory available for "cloudy day" illumination to balance light source



NEW! ifm's vision sensors include an on-board lighting element that illuminates the object and provides the correct amount of image brightness at various ranges.

Some applications, however, may require additional lighting. For example, detecting specific surface characteristics, such as a dot-peened code, scratches or nicks may require high intensity light. In contour sensing, sometimes there is not enough contrast between the object and the background. Additional backlighting may help emphasize the target against the background.

ifm's high-quality LED illumination units provide uniform lighting to solve a large

variety of applications. Models are available with white, red and infrared light in spot light, back light, ring light, bar illumination and dark field illumination units.

An assortment of mounting kits are provided and make installation quick and easy.

Technical Specs

Light source:	LED
Operating voltage:	24 V DC
Ambient temperature:	-10...55 °C
Housing material:	aluminum
Lens material:	glass
Trigger:	5...24 V, PNP
Protected against reverse polarity:	yes
Short-circuit proof:	yes
Mounting:	M4 screws
Eye safety:	IEC 62471

www.sazehgostarsgp.com

@sazehgostar_paytakht

Company	IO-Link	Position Sensors		Cylinder / valve position	Photoelectrics / lasers / fiber optics	Distance / Application specific	Ultrasonic	Motion Control	Encoders / Speed monitors	Vision Sensors
	IO-Link	Inductive	Capacitive							2D / 3D inspection
1 - 5	6 - 21	22 - 55	56 - 61	62 - 71	72 - 111	112 - 117	118 - 119	120 - 127	128 - 143	

Search Bar



Product + accessory selector

Type	Dimensions [mm]	Type of Light	Active lighting source size [Ø mm]	Current consumption [mA]	Angle of aperture	Protection	Connector	Part No.	List Price (1-pc.)
Spot light									
	31 x 42 x 54	red		180 / 90*		IP 65	M12	O2D909	\$358.00
Back light									
	33.4 x 66.5 x 9.2	infrared		50 / 25*		IP 65	0.15 m Pigtail 4-pin M12	O2D906	\$348.00
	81 x 103 x 9.8	infrared		200 / 100*		IP 65	0.15 m Pigtail 4-pin M12	O2D907	\$385.00
	133 x 156 x 9.8	infrared		450 / 250*		IP 65	0.15 m Pigtail 4-pin M12	O2D908	\$426.00
Ring light									
	Ø 122 x 20.5	red	Ø 106 / Ø 66	800 / 1300*	60°	IP 65	0.3 m Pigtail 4-pin M12	O2D915	\$779.00
	Ø 122 x 20.5	infrared	Ø 106 / Ø 66	800 / 1400*	50°	IP 65	0.3 m Pigtail 4-pin M12	O2D917	\$779.00
	Ø 122 x 20.5	white	Ø 106 / Ø 66	800 / 1200*	120°	IP 65	0.3 m Pigtail 4-pin M12	O2D919	\$779.00
Bar illumination									
	116 x 18 x 13	red	10 x 75	225 / 375*	60°	IP 65	0.3 m Pigtail 4-pin M12	O2D921	\$430.00
	200 x 18 x 13	red	10 x 150	460 / 700*	60°	IP 65	0.3 m Pigtail 4-pin M12	O2D924	\$538.00
	116 x 18 x 13	infrared	10 x 75	185 / 325*	50°	IP 65	0.3 m Pigtail 4-pin M12	O2D922	\$430.00
	200 x 18 x 13	infrared	10 x 150	415 / 640*	50°	IP 65	0.3 m Pigtail 4-pin M12	O2D925	\$538.00
	116 x 18 x 13	white	10 x 75	165 / 275*	120°	IP 65	0.3 m Pigtail 4-pin M12	O2D923	\$430.00
	200 x 18 x 13	white	10 x 150	265 / 475*	120°	IP 65	0.3 m Pigtail 4-pin M12	O2D926	\$538.00
Dark field illumination									
	155 x 130 x 9.8	red	Ø 90	400	-	IP 54	0.3 m Pigtail 4-pin M12	O2D920	\$592.00

* current consumption at high light intensity

Accessories

Type	Description	Part No.	List Price (1-pc.)	Type	Description	Part No.	List Price (1-pc.)
	Diffuser for ring light	E2D202	\$203.00		M12 Micro DC (4-pin) 2 m, PUR	EVC001	\$11.00
	Mounting kit for ring light	E2D201	\$31.00		M12 Micro DC (4-pin) 5 m, PUR	EVC002	\$15.00
	Mounting kit for bar illumination unit	E2D114	\$47.00		M12 Micro DC (4-pin) 10 m, PUR	EVC003	\$19.00
	Mounting kit for dark field illumination	E2D115	\$37.00		M12 Micro DC (4-pin) 2 m, PUR	EVC004	\$11.00
					M12 Micro DC (4-pin) 5 m, PUR	EVC005	\$15.00
					M12 Micro DC (4-pin) 10 m, PUR	EVC006	\$19.00

Safety Technology

Process Sensors

Industrial Networks

ID Systems

Machine Condition

Power Supplies

Wiring Technology

Safety products

Pressure

Flow

Level

Temperature

AS-i network

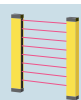
Safety systems

RF identification systems

Diagnostic systems

Power supplies

Cordset solutions



144 - 155



156 - 175



176 - 191



192 - 207



208 - 225



226 - 239



240 - 251



252 - 253



254 - 259



260 - 263

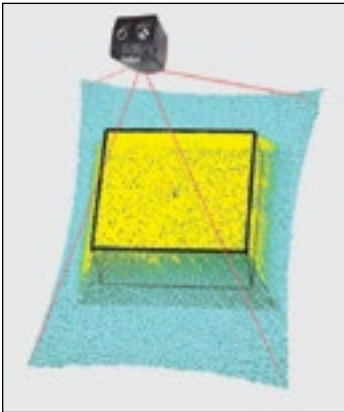


264 - 277



Top product features!

- Robust industrial O3D Smart Sensor – Application Assistant adds 3rd dimension to machines
- Includes two on-board applications: case completeness and box dimensioning
- Objective lens housing protected behind Corning Gorilla glass defines large field of view
- 4 IR LEDs illuminate large field of view over the 0.3 to 5 meter range protected behind Corning Gorilla glass
- M12 Ethernet connection for parameterization and communication output data via industrial Ethernet networks (TCP/IP & ProfiNet)



NEW! Today's manufacturing and logistics environments are becoming more and more automated to meet customer demand. The tools being used, whether it be robots or machines, have to become faster and more flexible to maintain throughput. This requires them to "see" more. 2D is not enough. They must be able to perceive their environment the same as we do... in 3D.

ifm's revolutionary O3D Smart Sensor for industrial automation enables automated machines to perceive their environment in 3D with human-like vision.

Innovative pmd imager

ifm's patented pmd time-of-flight imager provides 176 x 132 pixel array to quickly and accurately measure the distance of 23,232 points within its field of view. The

distance to each pixel is calculated by comparing the phase shift of send and returned infrared light. Every measurement is collected simultaneously and made immediately available as a fully calibrated 3D point cloud, which can be sent to a PC or controller via Ethernet.

The technology also features a patented suppression of background illumination technology making it immune to changing lighting conditions in the application environment.

Application Assistant adds third dimension!

The O3D Smart Sensor - your Application Assistant - adds a third dimension of sight to packaging and material handling machines. The Smart Sensor has four pre-built applications on board: case completeness, box dimensioning, palletizing / de-palletizing and level. The opportunities are endless.

An outstanding price/performance value, ifm's O3D Sensor can be applied in most areas throughout the plant!



To learn more, visit:
www.ifm.com/us/O3DSmartSensor

www.sazehgostarsgp.com

@sazehgostar paytakht

Company	IO-Link	Position Sensors		Cylinder / valve position	Photoelectrics / lasers / fiber optics	Distance / Application specific	Ultrasonic	Motion Control	Vision Sensors
	IO-Link	Inductive	Capacitive					Encoders / Speed monitors	2D / 3D inspection
1 - 5	6 - 21	22 - 55	56 - 61	62 - 71	72 - 111	112 - 117	118 - 119	120 - 127	128 - 143



Product + accessory selector

Dimensions	Operating Distance (mm)	Angle of Aperture	Max. Field of View (mm)	Weight (kg)	Part No.	List Price (1-pc.)
137 x 75 x 95	300... 10,000	40° x 30°	2,610 x 3,470	0.745	O3D300	\$1,351.00
	300... 8,000	60° x 45°	3,750 x 5,000	0.736	O3D302	\$1,351.00
	300... 8,000	60° x 45°	3,750 x 5,000	1.146	O3D312	\$1,460.00
	300... 10,000	40° x 30°	2,610 x 3,470	1.225	O3D310	\$1,460.00

Accessories

Type	Description	Part No.	List Price (1-pc.)	Type	Description	Part No.	List Price (1-pc.)
	Mounting set for rod mounting Ø 14 mm	E3D301	\$60.00		M12 Micro DC (8-pin) 2 m, PUR	E11231	\$29.00
					M12 Micro DC (8-pin) 5 m, PUR	E11232	\$36.00
					M12 Micro DC (8-pin) 2 m, PUR	E11950	\$29.00
					M12 Micro DC (8-pin) 5 m, PUR	E11807	\$36.00
					Ethernet cable, 2 m, M12 D-coded / RJ45, cross-link	E11898	\$45.00
					Ethernet cable, 5 m, M12 D-coded / RJ45, cross-link	E18422	\$54.00
					Ethernet cable, 10 m, M12 D-coded / RJ45, cross-link	E18423	\$69.00

Technical Specs

Maximum load current:	100 mA
Current consumption:	< 2400 peak current pulsed; typ. mean value 420; max. mean value 1600 mA
Image repetition rate:	≤ 25 Hz
Lighting:	infrared LED 850 nm; invisible radiation of light-emitting diodes
Operating voltage:	20.4... 28.8 DC; to EN 61131-2
Operating temperature:	14... 122 °F (-10... 50 °C)
Protection rating:	O3D300 and O3D302 IP65, IP67, O3D310 and O3D312 IP65, IP67 and IP69K
Material:	Lens window: corning gorilla glass Housing: O3D300 and O3D302 diecast aluminum O3D310 and O3D312 stainless steel
Parameter setting / process interface:	Ethernet TCP, Ethernet IP: 10BaseT / 100Base-TX



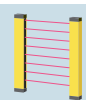
Dedicated sales engineers

ifm's experienced sales engineers understand your applications and provide solutions to your challenges.

- Place orders, tech support**
800-441-8246
- Visit our product catalog**
www.ifm.com/us
- Shop for products online**
Easy ordering via eShop

Safety Technology

Safety products



144 - 155

Process Sensors

Pressure



156 - 175

Flow



176 - 191

Level



192 - 207

Temperature



208 - 225

Industrial Networks

AS-i network



226 - 239

Safety systems



240 - 251

ID Systems

RF identification systems



252 - 253

Machine Condition

Diagnostic systems



254 - 259

Power Supplies

Power supplies



260 - 263

Wiring Technology

Cordset solutions



264 - 277